



AVEDIS FOUNDATION
10TH ANNIVERSARY

2022 PRESS KIT

Since its founding in 2012, Avedis Foundation has served as a catalyst for positive change in Shawnee, Pottawatomie County and our neighboring communities.



With holdings of \$100 million, Avedis is committed to supporting the many nonprofit organizations, schools, community projects and other initiatives that help improve the health, wellness and quality of life of the communities we serve.

As we reflect on the past 10 years, we recognize that our community's needs are great, but our calling to serve it is greater.

DR. KATHY LASTER, PRESIDENT/CEO
AVEDIS FOUNDATION

WATCH

Scan here with your smartphone to watch the The Avedis Story: "We're here for good."



@AVEDISFOUNDATION



avedis_foundation



avedisfoundation.org

CONTENTS

3	FAST FACTS AND ORIGINS
4	FOUNDATION TIMELINE 2012-22
5	2012-22 GIVING SUMMARY
6	FOUNDATION BOARD
7	FOUNDATION STAFF
8	FOUNDATION FACILITIES

FAST FACTS

The name “Avedis” means “the bearer of glad tidings” or “one who brings good news.”

.....

The Foundation’s mission is to *measurably improve the health, wellness and quality of life for the people of Pottawatomie County and its surrounding communities.*

.....

Since its founding in 2012, Avedis Foundation has allocated **more than \$55 million** in projects, initiatives and nonprofit organizations for the benefit of our community.

.....

The Foundation’s signature statement, “*We’re here for good,*” is both a commitment to the communities we serve and a promise to continue investing in those communities for years to come.

We’re here for good.

FOUNDATION ORIGINS

Avedis Foundation was incorporated in Shawnee, Oklahoma in 2012 as one of Oklahoma’s largest private foundations by the acquisition of Unity Health Center by SSM Health Care Oklahoma, the parent company of the St. Anthony Network.

The founding Board of Directors named Michelle Briggs as the Foundation’s CEO. Charles Shields served as the Board Chair, followed by Mike Adcock.

Through collaborative partnerships, strategic investments and grantmaking, the Foundation has granted more than \$55 million to organizations and initiatives that strengthen the community in the areas of Health and Wellness, Education, Social Services and Community Enrichment.

AREAS OF FOCUS

COLLABORATIVE PARTNERSHIPS

Avedis addresses complex community issues through collaborations with nonprofits, education systems, community organizations, city and county government, key stakeholders or additional funders to attain achievable outcomes.

STRATEGIC INVESTMENTS

Avedis Foundation invests in positive change for the communities in its service area by partnering with those communities to identify needs and promote real and lasting change through targeted investments.

GRANTMAKING

Avedis Foundation accepts grant requests from eligible nonprofit 501(c)(3) organizations and other non-taxable entities in Pottawatomie County and surrounding communities through an online application process.

2012-22 TIME LINE

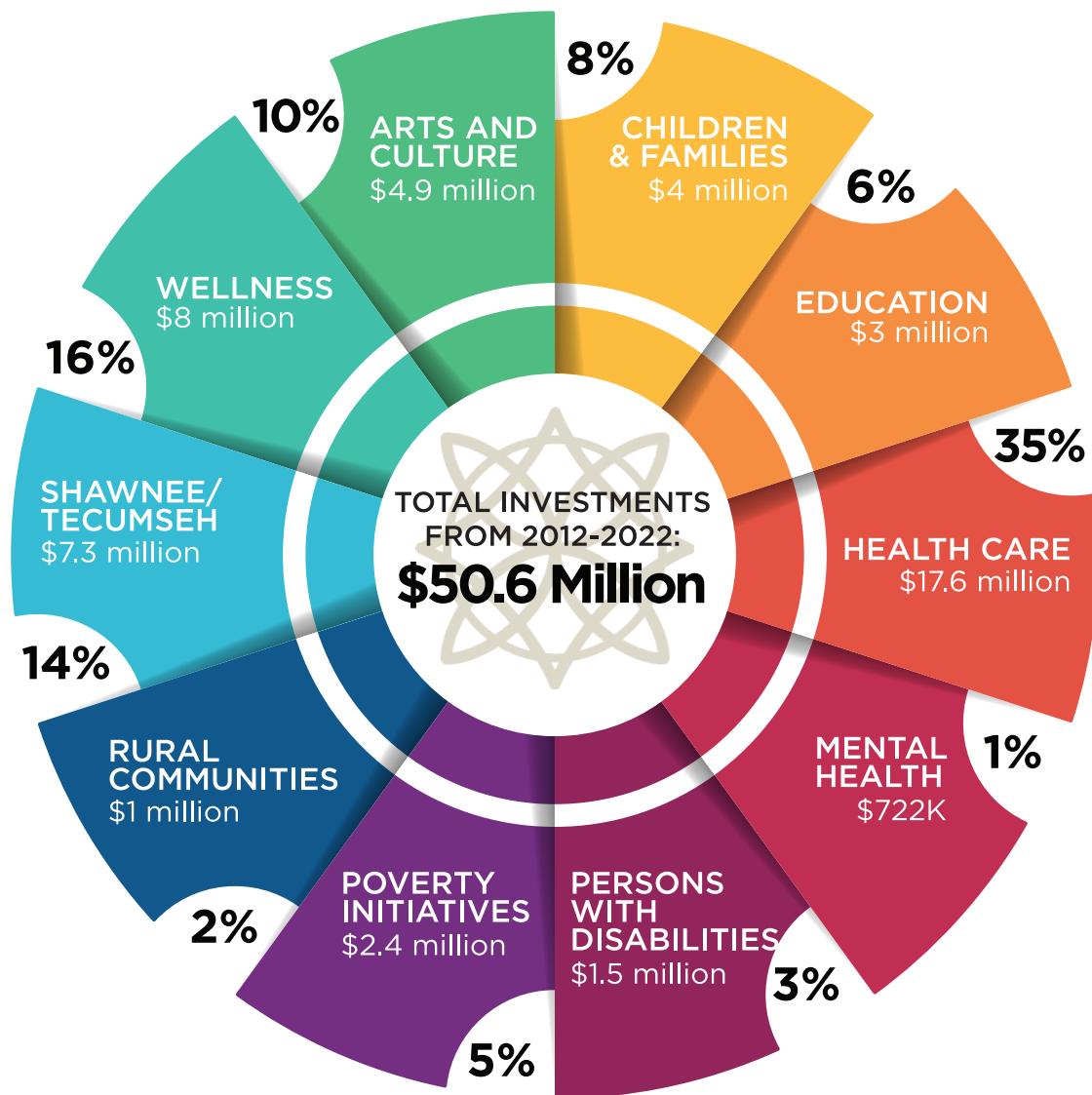
The chart to the right highlights Avedis Foundation's significant milestones and projects from 2012-22.

.....

Since its founding in 2012, Avedis Foundation has allocated **more than \$55 million** in projects, initiatives and nonprofit organizations for the benefit of our community.



Through collaborative partnerships, strategic investments and grantmaking, the Foundation has granted more than \$55 million to organizations and initiatives that strengthen the community in the areas of Health and Wellness, Education, Social Services and Community Enrichment.



FOUNDATION BOARD OF DIRECTORS

(L-R)
NICK ATWOOD
MARK FINLEY
SUDHIR GUPTA, MD



(L-R)
TINA HANNA
JOE HODGES
MARISSA LIGHTSEY



(L-R)
ANGI MOHR
JOHN ROBINSON, MD
JILL SPENCER



(L-R)
SARAH STEELY
JOSH L. TRIMBLE
JEFF MADISON



(L-R)
STEPHEN TROTTER, MD
MICHAEL WARWICK, BOARD CHAIR





KATHY LASTER, Ph.D.
PRESIDENT/CEO



TRACY MEEUWSEN
PROGRAM DIRECTOR



CHEYENNE PETTIGREW
OFFICE MANAGER



AUDREY SEELIGER
EXTERNAL RELATIONS/
SPECIAL EVENTS DIRECTOR

INDEPENDENT FINANCIAL CONSULTANT



LAUREN THOMAS, CPA
SAMERSON PLLC



In 2018, Avedis Foundation relocated to its newly constructed headquarters at 1500 E. Independence in Shawnee. With its modern design, the 6,842 square-foot space features large and small conference rooms, a large kitchen for catered events, and a spacious, covered back porch for outdoor gatherings.

The Foundation designed this beautiful, state-of-the-art facility with the express desire to share it with the community, and regularly hosts educational and professional development events for local nonprofits.



We're here for
good.